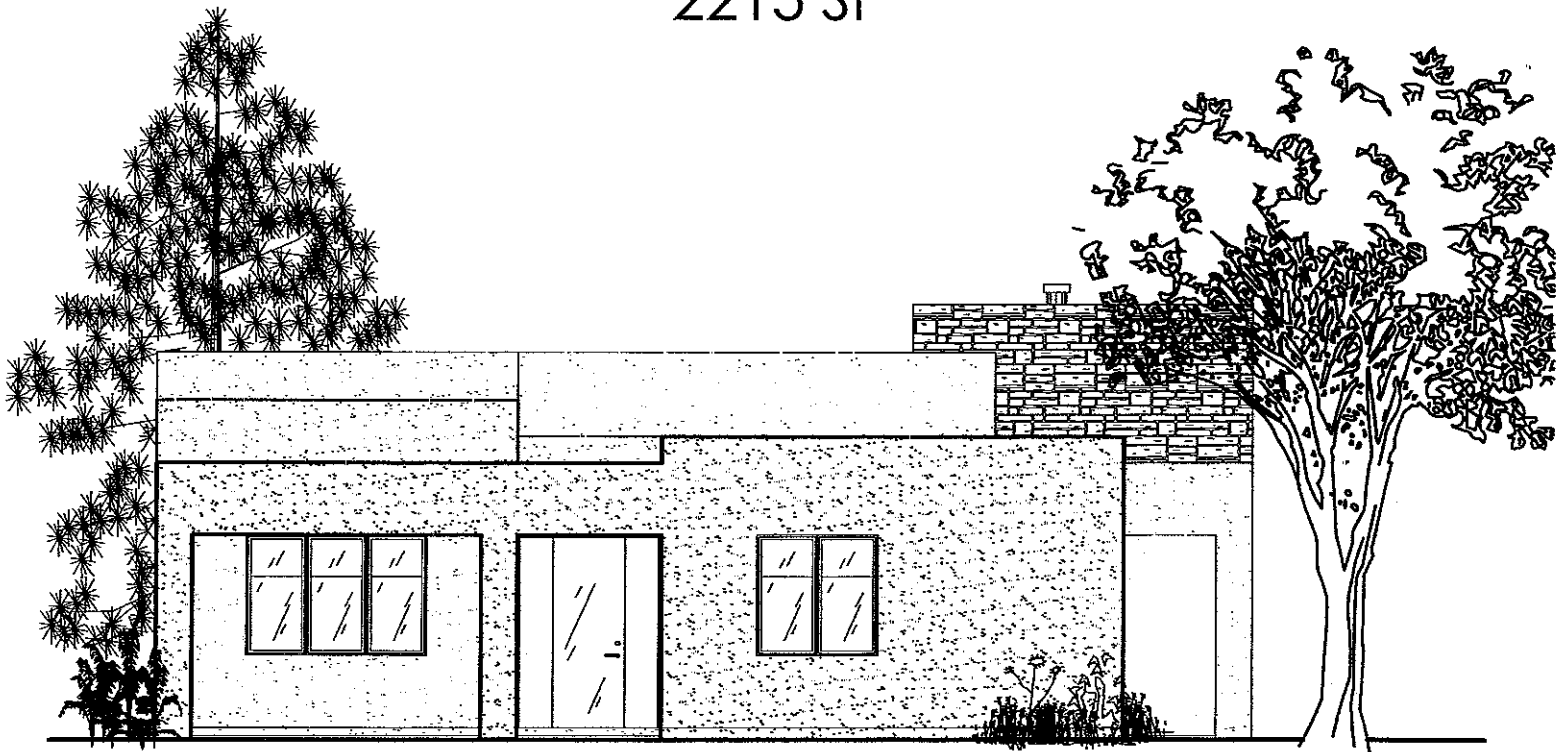




Oshara Concepts, llc

LA BONITA

2215 SF



© 2006 VISUAL CONCEPTS
ALL RIGHTS RESERVED

Homes built by SIERRA DEL SOL, LLC.

P 505.930.0148 F 505.424.3960

Plans designed by VISUAL CONCEPTS

P 505.930.9118 F 505.438.1176

LA BONITA

2215 SF

SPECIFICATIONS

ENERGY STAR COMPLIANT FOUNDATION:

- Monolithic footing/stem wall/slab; 3000 p.s.i. concrete

FRAMING:

- 2x6 exterior walls at 16" on center with R-21 Cellulose Insulation
- Engineered wood trusses at roof structure with R-50 Insulation
- Sound insulation at all Bedrooms and Bathrooms

DOORS:

- Solid wood exterior and interior
- Wood Garage doors

WINDOWS:

- Clad/wood Casements

EXTERIOR FINISH SYSTEM:

- 2-Coat fiber-reinforced synthetic stucco system
- Stone Veneer as noted on plan

ROOFING:

- Rubber membrane roof system, torch applied and sloped 3/8" per foot to drains

LANDSCAPE/SITWORK:

- Xeriscape, with drip-irrigation system
- Water Reclamation System for watering landscape
- Water feature

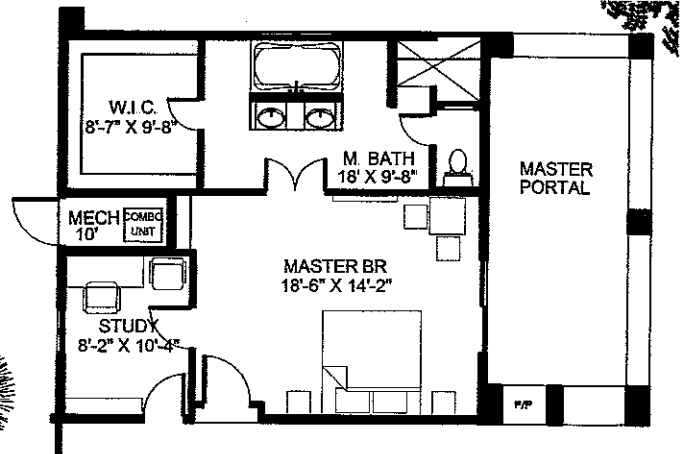
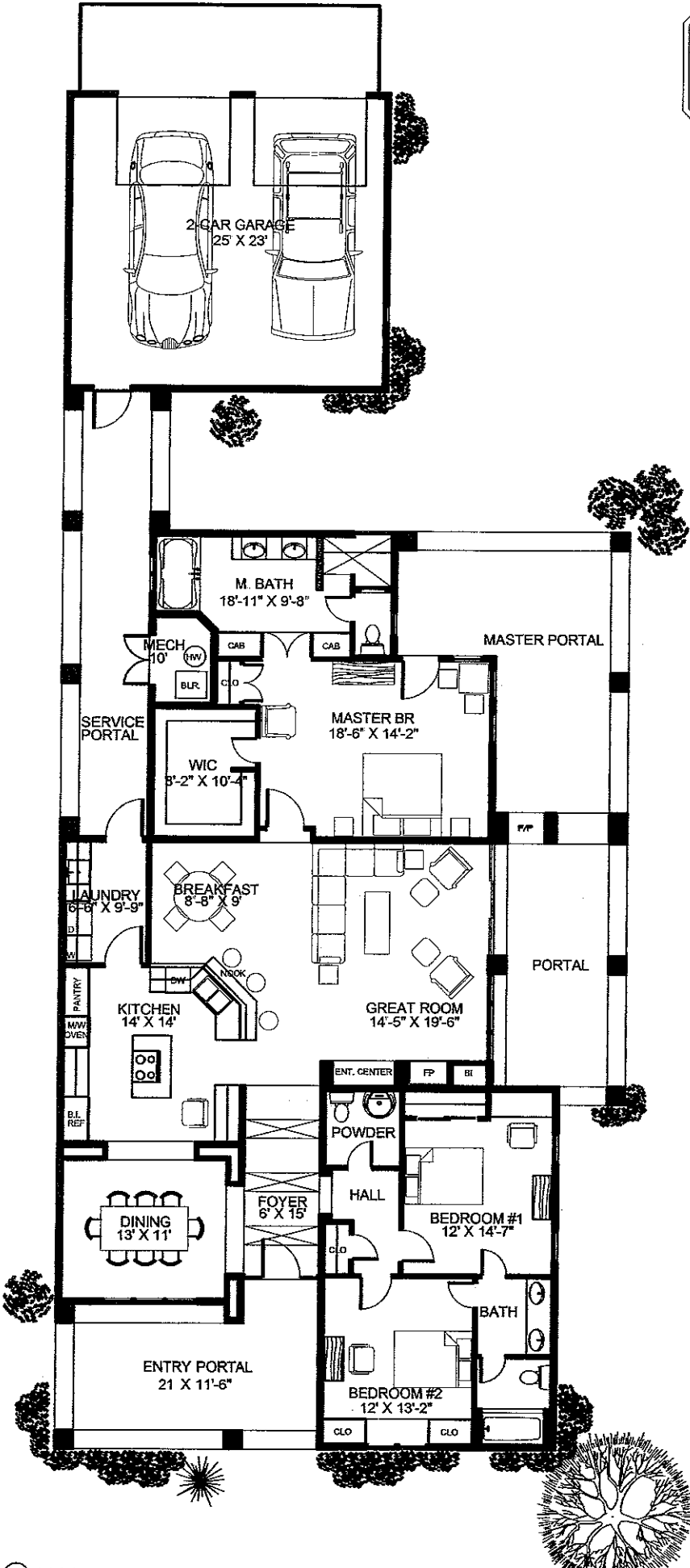
APPLIANCES:

- JennAir Appliances including Dishwasher, Refrigerator, Cooktop, Microwave/Oven, Washer, Dryer, Disposer

FINISHES:

- Stained and sealed exterior concrete
- Honed and polished interior concrete
- Carpet in Bedrooms
- High-grade semi-gloss enamel paint
- Ceramic tile countertops

OUTDOOR BBQ GRILLE



OPTIONAL MASTER WING